

SURI-RS

~6° real spot beam with holder

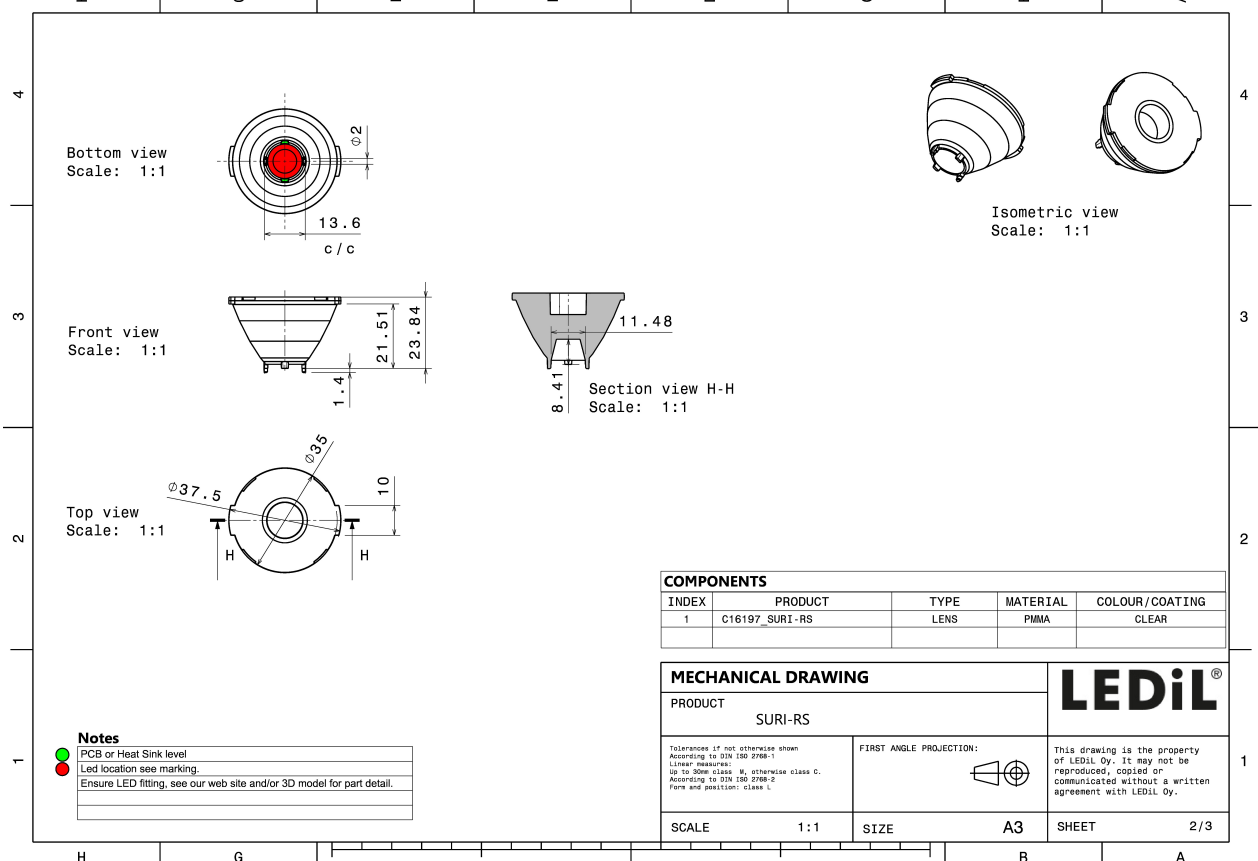
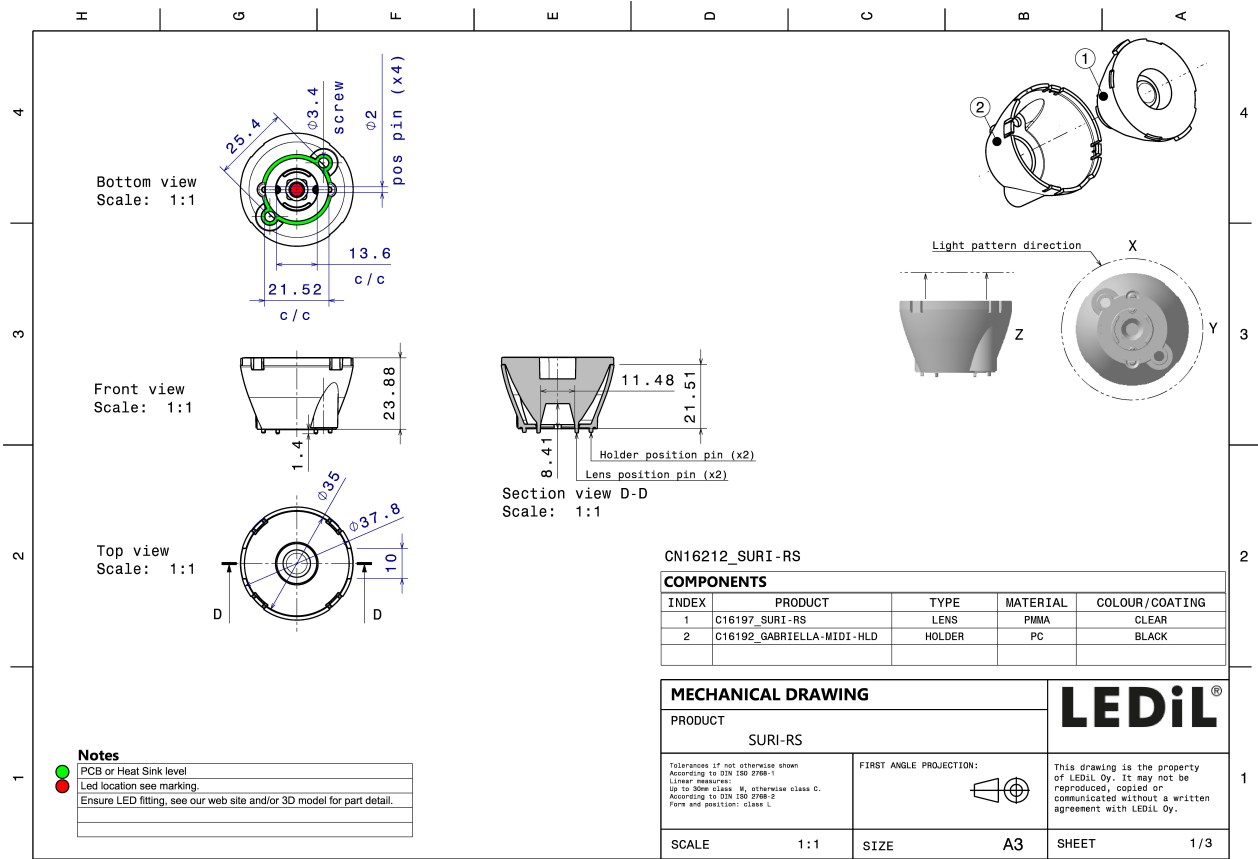
TECHNICAL SPECIFICATIONS:

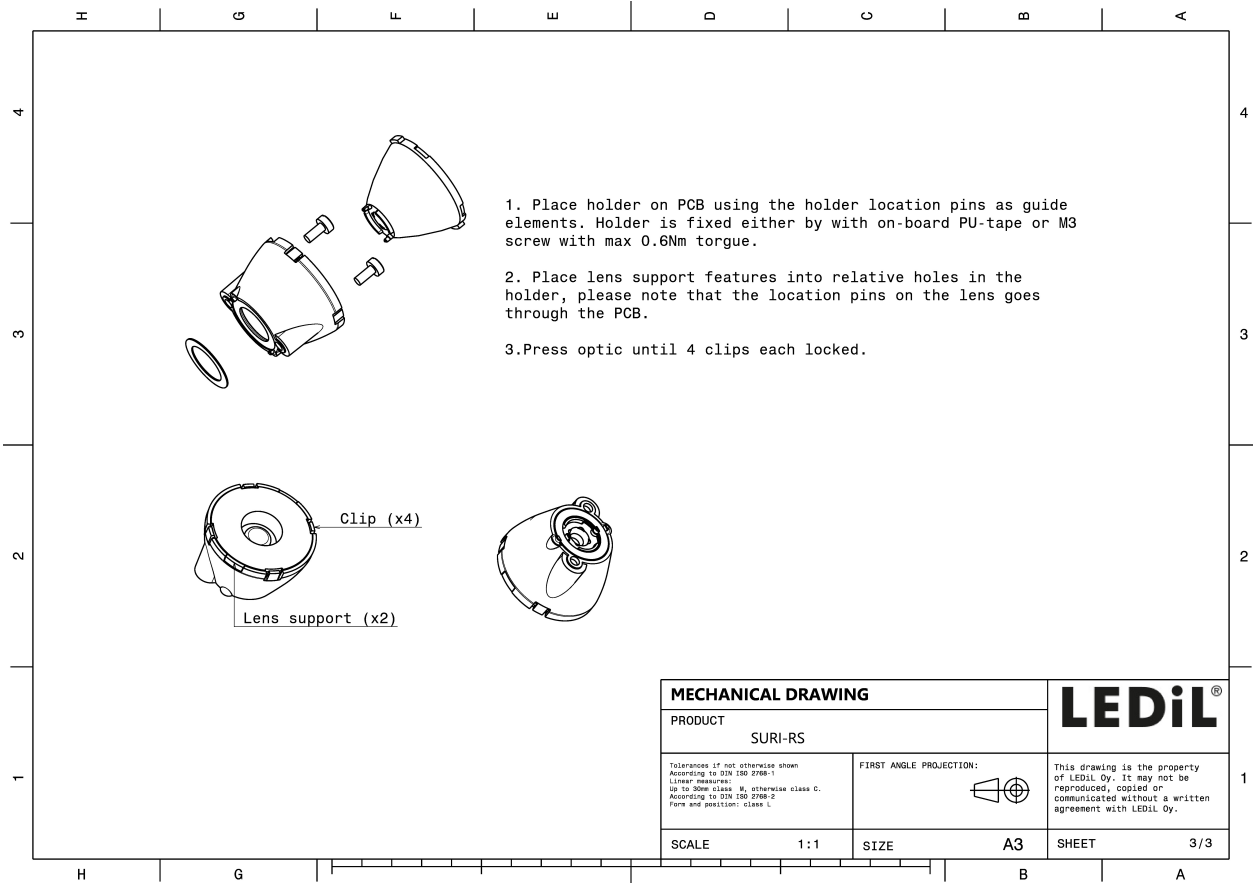
Dimensions	Ø 37.8 mm
Height	23.9 mm
Fastening	pin, screw
Colour	black
Box size	
Box weight	0 kg
Quantity in Box	450 pcs
ROHS compliant	yes ⓘ



MATERIAL SPECIFICATIONS:

Component	Type	Material	Colour
SURI-RS	Lens	PMMA	clear
GABRIELLA-MIDI-HLD	Holder	PC	black

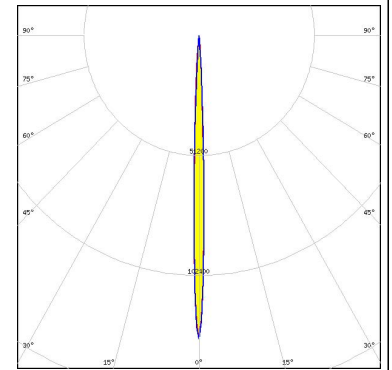
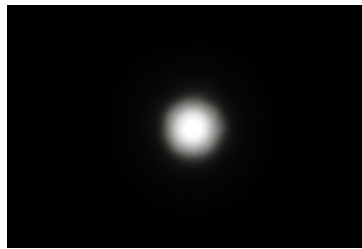




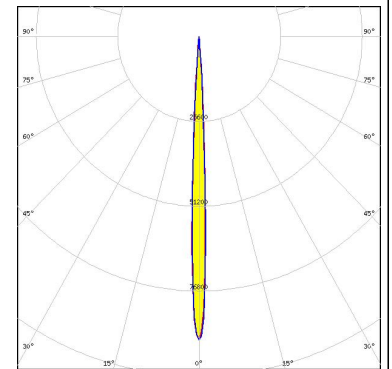
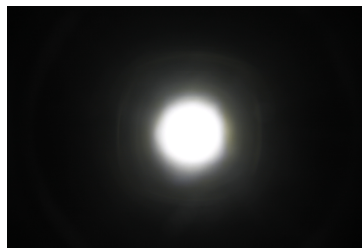
PHOTOMETRIC DATA (MEASURED):



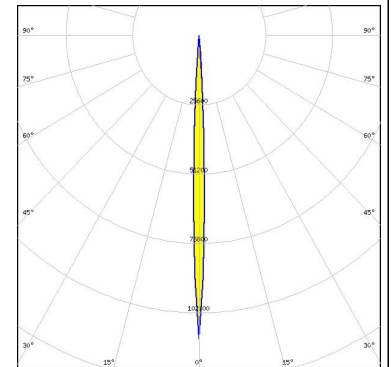
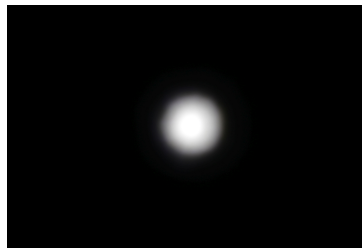
LED XQ-E HI
 FWHM 4.0°
 Efficiency 91 %
 Peak intensity 129.500 cd/Im
 Required components:



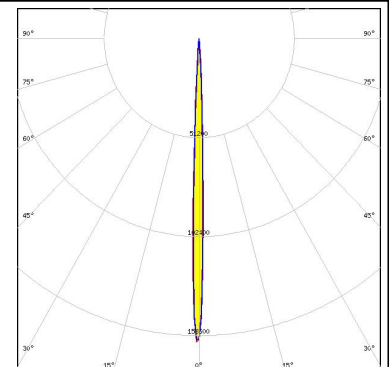
LED LUXEON C
 FWHM 5.0°
 Efficiency 86 %
 Peak intensity 91.500 cd/Im
 Required components:



LED LUXEON CZ
 FWHM 4.0°
 Efficiency 93 %
 Peak intensity 124.000 cd/Im
 Required components:



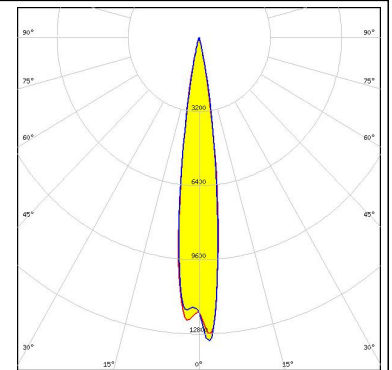
LED LUXEON Z
 FWHM 4.0°
 Efficiency 92 %
 Peak intensity 158.000 cd/Im
 Required components:



PHOTOMETRIC DATA (MEASURED):

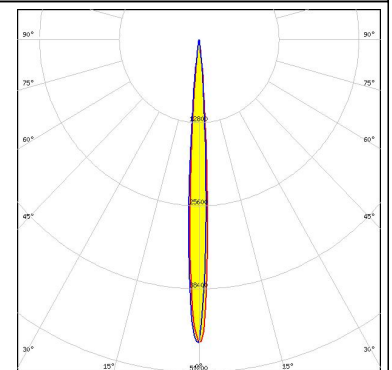
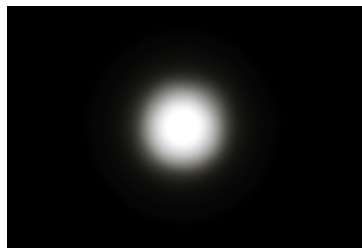
OSRAM
Opto Semiconductors

LED Duris S8
FWHM 14.0°
Efficiency 90 %
Peak intensity 13.500 cd/lm
Required components:



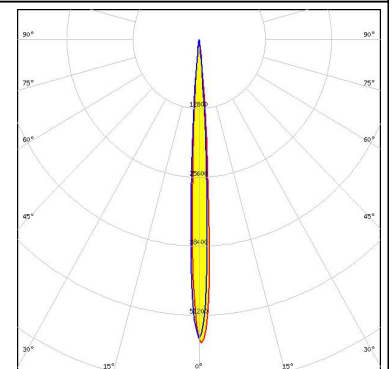
OSRAM
Opto Semiconductors

LED OSCONIQ P 3737 (2W version)
FWHM 7.0°
Efficiency 90 %
Peak intensity 47.700 cd/lm
Required components:



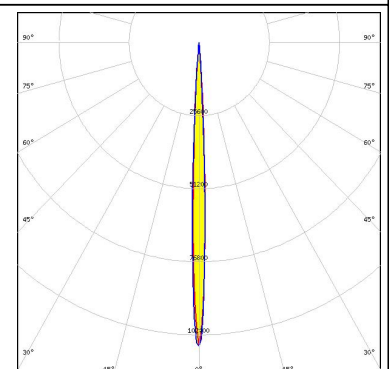
OSRAM
Opto Semiconductors

LED Oslon Square EC
FWHM 6.0°
Efficiency 90 %
Peak intensity 56.000 cd/lm
Required components:



OSRAM
Opto Semiconductors

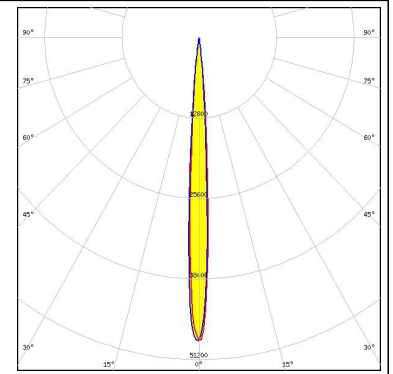
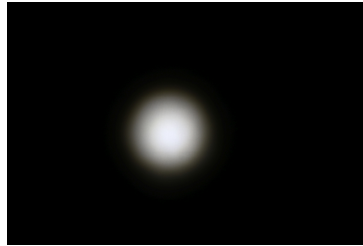
LED Oslon SSL 150
FWHM 5.0°
Efficiency 93 %
Peak intensity 106.000 cd/lm
Required components:



PHOTOMETRIC DATA (MEASURED):

SAMSUNG

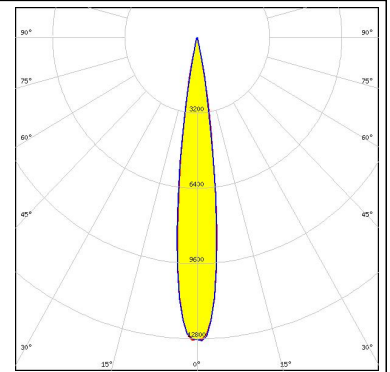
LED LH181B
FWHM 7.0°
Efficiency 91 %
Peak intensity 48.200 cd/lm
Required components:



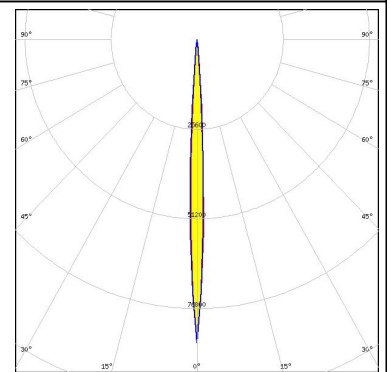
PHOTOMETRIC DATA (SIMULATED):



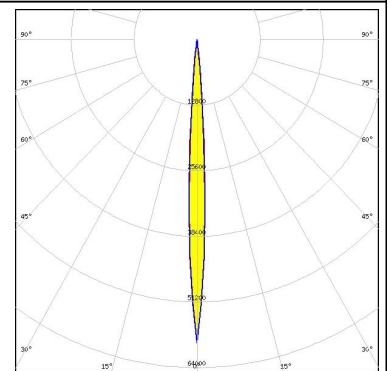
LED XHP50.2
 FWHM 14.0°
 Efficiency 89 %
 Peak intensity 13.000 cd/lm
 Required components:



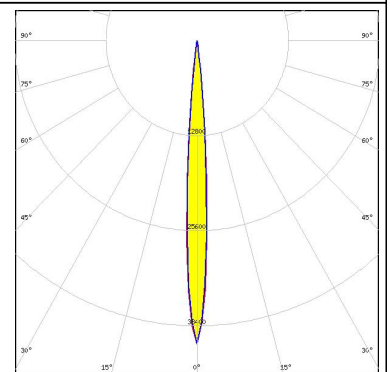
LED XP-E2
 FWHM 5.0°
 Efficiency 91 %
 Peak intensity 85.000 cd/lm
 Required components:



LED XP-G2
 FWHM 6.0°
 Efficiency 91 %
 Peak intensity 58.000 cd/lm
 Required components:



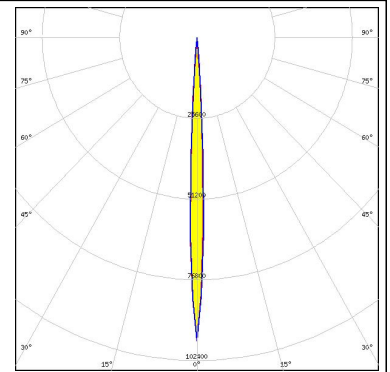
LED XP-G3
 FWHM 7.7°
 Efficiency 90 %
 Peak intensity 40.800 cd/lm
 Required components:



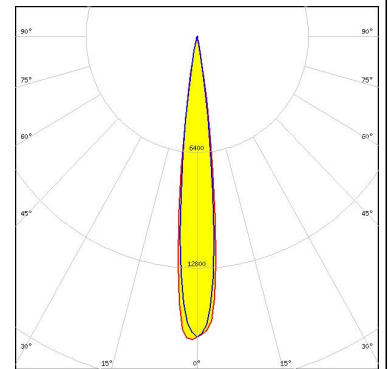
PHOTOMETRIC DATA (SIMULATED):



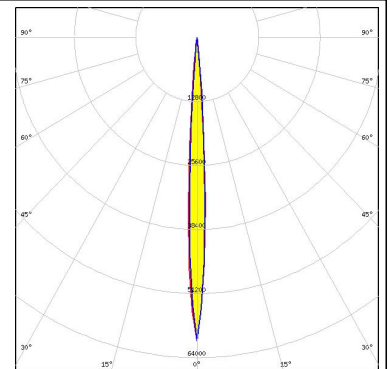
LED XQ-E
 FWHM 5.2°
 Efficiency 92 %
 Peak intensity 96.200 cd/lm
 Required components:



LED Duris S8
 FWHM 13.0°
 Efficiency 92 %
 Peak intensity 16.800 cd/lm
 Required components:



LED Oslon Square Gen3
 FWHM 6.4°
 Efficiency 92 %
 Peak intensity 60.700 cd/lm
 Required components:



GENERAL INFORMATION:

NOTE: The typical beam angle will be changed by different color, chip size and chip position tolerance. The typical total beam angle is the full angle measured where the luminous intensity is half of the peak value.

MATERIALS:

As part of our continuous research and improvement processes, and to ensure the best possible quality and availability of our products, LEDiL reserves the right to change material grades without notice.

PRODUCT DATA USER AGREEMENT AND DISCLAIMER:

The measured data in the provided downloadable LEDiL Product Datasheets and Mechanical 2D-Drawings is rounded and provided as reference for planning. LEDiL Oy's optical specifications have been verified by conducting performance testing of the products in accordance with the company's quality system. The reported data are averaged results of multiple measurements with typical variation. LEDiL Oy reserves the right to without prior notification make changes and improvements to its products.

LEDiL Oy assumes neither warranty, nor guarantee nor any other liability of any kind for the contents and correctness of the provided data. The provided data has been generated with highest diligence but the provided data may in reality not represent the complete possible variation range of all intrinsic parameters. Therefore, in certain cases a deviation from the provided data could occur.

LEDiL Oy reserves the right to undertake technical changes of its products without further notification which could lead to changes in the provided data. LEDiL Oy assumes no liability of any kind for the possible deviation from any provided data or any other damage resulting from the usage of the provided data.

The user agrees to this disclaimer and user agreement with the download or usage of the provided files.

LEDiL Oy

Joensuunkatu 13
FI-24240 SALO
Finland

LEDiL Inc.

228 West Page Street
Suite D
Sycamore IL 60178
USA

Local sales and technical support

[www.ledil.com/
where_to_buy](http://www.ledil.com/where_to_buy)

Shipping locations

Salo, Finland
Hong Kong, China

Distribution Partners

[www.ledil.com/
where_to_buy](http://www.ledil.com/where_to_buy)